



16T-ES19-TB

Features

- Predestined for public surroundings (vandalism risk), industrial extreme surroundings
- Carbon contact technology
- High operating comfort thanks to our specially developed long-stroke keys
- Keycaps and front panel made of stainless steel
- Almost resistant to the effects of violence
- Backlit key symbols are done by laser etching and injection mold (Material: PC glass clear)
- Any layout is possible
- Any customer-specific adaptations can be implemented on request
- Also available in housing, with trackball and with other number of keys
- Available with backlit keycaps

Mechanical Data

- Dimensions of 197 x 130 x 45 mm
 - 3,25 mm travel keys with tactile feel
 - Operation force 0,65 N
 - 16+3 keys in compact layout
 - Ergonomic 15 mm keycaps
 - Durability > 10 million ops.
 - Storage temperature -40°C - +80°C
 - Operation temperature -30°C - +60°C
- Protection IP65, IK09

Electrical Data

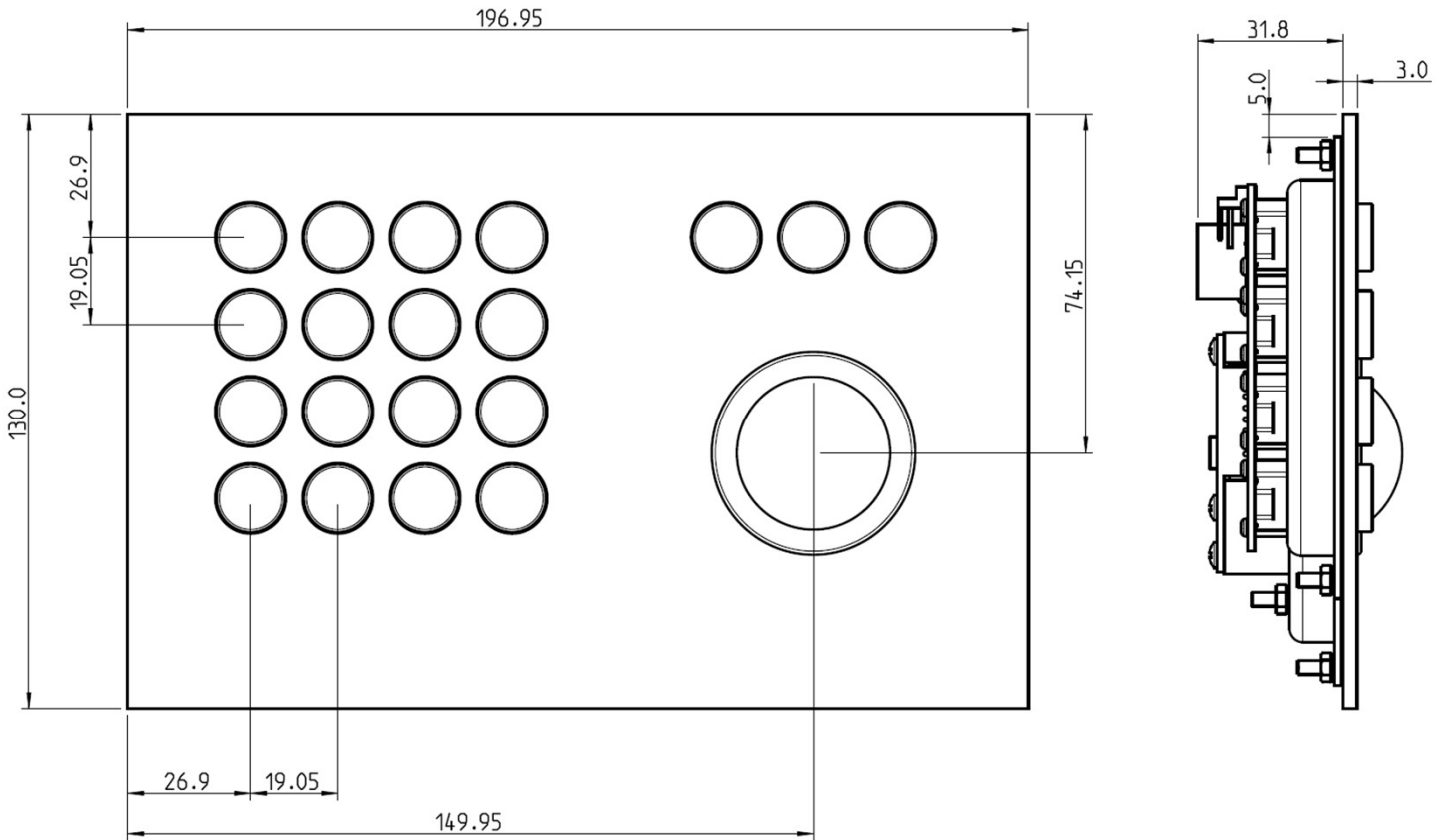
- Connection options: USB 2.0
- Power supply + 5 V/DC, 50 mA
- CE Compliant
- RoHS/Reach Compliant



PRINTEC
DS

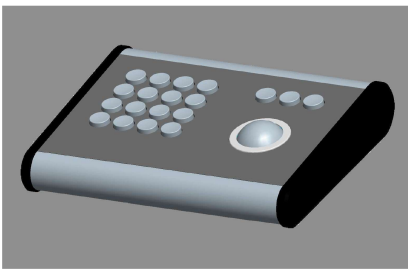
control touch trust

Drawing



Variants

Here is a selection of similar keypads. Are you interested in any of the following solutions? Just get in touch with us.



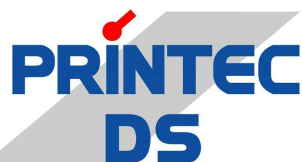
16T-ES19 GEH



16T-ES19



12T-ES HL



+49 7738 80241-0 ▶

support@printecds.com ▶

www.printecds.com ▶